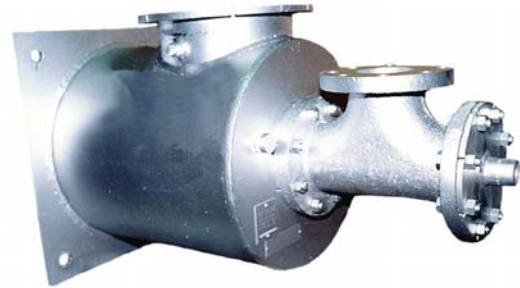


1029 SERIES FUEL ENERGY COLD AIR BAFFLE BURNER

CAPABILITIES

- Luminous flames at all firing levels
- High release rates with moderate air pressure
- Turndown to 15 to 1 on ratio with flame characteristics and direction maintained with gas
- Stable flames with lengths tailored to the application



FEATURES

- Luminous, well directed flame
- Rugged fabricated construction
- Refractory baffle flame stabilization
- Baffle shields the burner internals from flame
- Suitable for operation at furnace temperatures up to 2600°F (1427°C)
- Heat resistant alloy nozzle
- Provisions for flame monitoring
- Spark ignition available
- Lower energy costs, improved productivity and yield

CONTROL

- Pressure Balance Ratio Regulators
- Volumetric Air Ratio Control
- Tandem Valves
- Note: Gas distribution orifice recommended at each burner in multiple burner zones due to low gas pressure

APPLICATIONS

- Aluminum and Copper Reverberatory Furnaces
- Many other Applications requiring luminous, high momentum flames at all firing levels.

BURNER IGNITION

- Pilot
- Direct Spark
- Manual

FUEL CAPABILITIES

- Natural Gas
- LP Gas
- Low BTU Mixed Gas
- #2 Oil through #6 Oil and Tar

FLAME MONITORING

- U.V. Detector
- Please contact your Bloom representative for flame monitoring with residual oil

OPTIONS

- Designs with cleanout doors
- Angled mounting flange
- Angled air riser

CAUTION: The improper use of combustion equipment can result in a condition hazardous to people and property. Users are urged to comply with National Safety Standards and/or Insurance Underwriters recommendations

1029 SERIES FUEL ENERGY COLD AIR BAFFLE BURNER

CAPACITY CHART

Catalog No. 1029-	Maximum Air Capacity 12" wc Air Pressure (29.85 mbar)		Pilot Size
	scfh	Nm ³ /hr	
040	30,800	826	3001-050
060	46,200	1,239	3001-050
065	64,600	1,732	3001-050
080	93,300	2,501	3001-050
085	116,600	3,126	3001-050
100	155,000	4,156	3001-100
120	217,800	5,839	3001-100
140	264,000	7,078	3001-100
160	330,000	8,847	3001-150
180	407,000	10,912	3001-150
200	484,000	12,976	3001-150
220	583,000	15,630	3001-150
240	682,000	18,284	3001-150

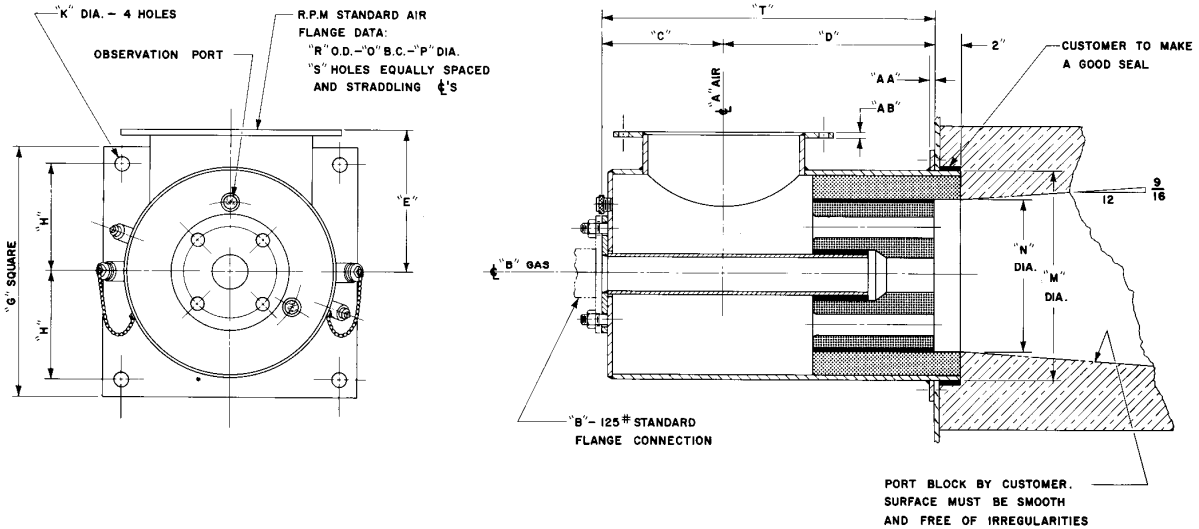
"B" Line Size		Maximum Capacity	
inches	mm	MM Btu/hr	MM kcal/hr
2	51	4	1
2 ½	64	6	2
3	76	11	3
4	102	20	5
6	152	48	12
8	203	80	20
10	254	124	31
12	305	175	44

NOTE: GENERAL DIMENSION INFORMATION. SEE BLOOM REPRESENTATIVE FOR CERTIFIED DIMENSIONS FOR CONSTRUCTION

CAUTION: The improper use of combustion equipment can result in a condition hazardous to people and property. Users are urged to comply with National Safety Standards and/or Insurance Underwriters recommendations

1029 SERIES FUEL ENERGY COLD AIR BAFFLE BURNER

GENERAL DIMENSIONS FOR -040 THRU -100



Catalog No. 1029-	General Dimensions* (inches/mm)																Ship Weight less block		
	A	B	C	D	E	G	H	K	M	N	O	P	R	S	T	AA	AB	lbs	kg
040	4	SEE GAS LINE SIZE CHART	4.38	10.75	7.75	14	5.5	.88	10.75	TO SUIT APPLICATION	5.94	.63	6.69	8	15.13	.38	.50	100	45
	102		111	273	197	356	140	22	273		151	16	170	203	384	10	13		
060	6		5.38	11.50	8.75	16	6	.88	12.75		7.88	.63	8.69	8	16.88	.38	.50	140	64
	152		137	292	222	406	152	22	324		200	16	221	203	429	10	13		
06X	6		5.38	11.50	9.38	18	7	1.13	14		7.88	.63	8.69	8	16.88	.38	.50	190	86
	152		137	292	238	457	178	29	356		200	16	221	203	429	10	13		
080	8		6.38	12.50	10.38	20	8	1.13	16		10	.63	10.81	8	18.88	.38	.50	275	125
	203		162	318	264	508	203	29	406		254	16	275	203	480	10	13		
08X	8		6.38	12.50	10.38	20	8	1.13	16		10	.63	10.19	8	18.88	.38	.50	275	125
	203		162	318	264	508	203	29	406		254	16	259	203	480	10	13		
100	10	7.38	15	11.50	22	9	1.13	18	12.25	.75	14.06	12	22.38	.38	.50	380	172		
	254	187	381	292	559	229	29	457	311	19	357	305	568	10	13				

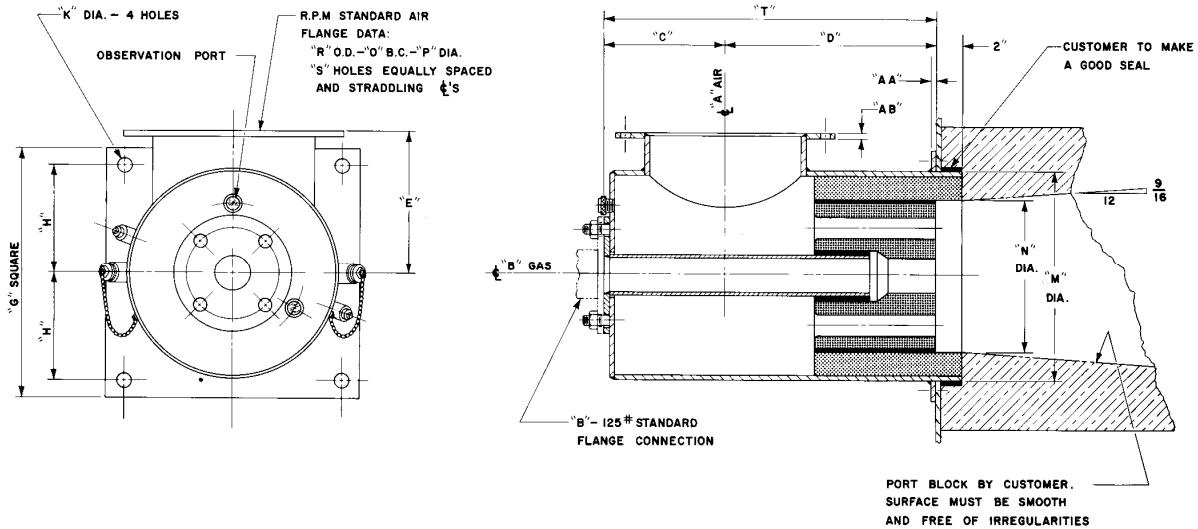
*Other combinations of air connection ("A") and body ("M") diameters available to suite specific applications.

NOTE: GENERAL DIMENSION INFORMATION. SEE BLOOM REPRESENTATIVE FOR CERTIFIED DIMENSIONS FOR CONSTRUCTION

CAUTION: The improper use of combustion equipment can result in a condition hazardous to people and property. Users are urged to comply with National Safety Standards and/or Insurance Underwriters recommendations

1029 SERIES FUEL ENERGY COLD AIR BAFFLE BURNER

GENERAL DIMENSIONS FOR -120 THRU -240



Catalog No. 1029-	General Dimensions* (inches/mm)																Ship Weight less block		
	A	B	C	D	E	G	H	K	M	N	O	P	R	S	T	AA	AB	lbs	kg
120	12	SEE GAS LINE SIZE CHART	8.38	17	12.50	24	10	1.13	20	TO SUIT APPLICATION	14.25	.75	16.06	12	25.38	.50	.50	440	200
	305		213	432	318	610	254	29	508		362	19	408	305	645	13	13		
140	14		9.38	18	13.50	26	11	1.13	22		16.25	.75	18.06	12	27.38	.50	.50	500	227
	356		238	457	343	660	279	29	559		413	19	459	305	695	13	13		
160	16		9.38	19	14.50	28	12	1.13	24		19.25	.75	21.25	16	28.38	.50	.50	600	272
	406		238	483	368	711	305	29	610		489	19	540	406	721	13	13		
180	18		10.38	20	15.50	30	13	1.13	26		21.25	.75	23.25	16	30.38	.50	.50	733	332
	457		264	508	394	762	330	29	660		540	19	591	406	772	13	13		
200	20	11.38	21	16.50	32	14	1.38	28	23.38	.75	25.25	20	32.38	.63	.50	860	390		
	508	289	533	419	813	356	35	711	594	19	641	508	822	16	17				
220	22	12.38	22	17.75	35	15	1.38	30	26	.75	28.25	20	34.38	.63	.50	1050	476		
	559	314	559	451	889	381	35	762	660	19	718	508	873	16	13				
240	24	14.38	23	18.75	37	16	1.50	32	27.75	.75	30	20	37.38	.63	.50	1240	562		
	610	365	584	476	940	406	38	813	705	19	762	508	949	16	13				

*Other combinations of air connection ("A") and body ("M") diameters available to suite specific applications.

NOTE: GENERAL DIMENSION INFORMATION. SEE BLOOM REPRESENTATIVE FOR CERTIFIED DIMENSIONS FOR CONSTRUCTION

CAUTION: The improper use of combustion equipment can result in a condition hazardous to people and property. Users are urged to comply with National Safety Standards and/or Insurance Underwriters recommendations.