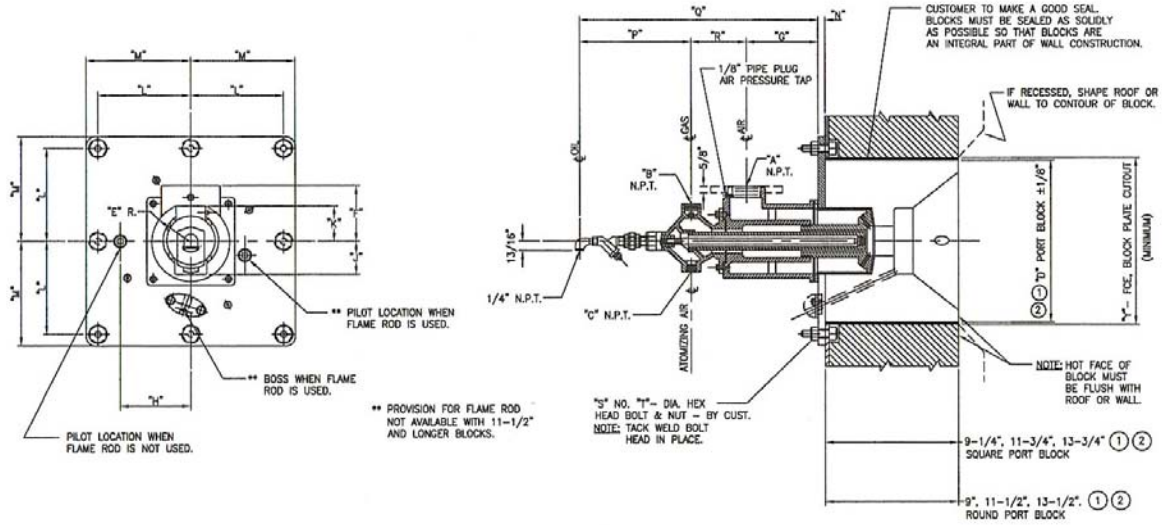


2026 SERIES HTR® COLD AIR BURNER GAS AND LP OIL

GENERAL DIMENSIONS



| Catalog No. 2026- | General Dimensions (inches/mm) | | | | | | | | | | | | | | | | | | | |
|-------------------|--------------------------------|-----|-----|-------|-------|------|----------------|------|------|------|------|-------|-------|----------------|-------|------|-----|------|-------|-------|
| | A | B | C | D | E | F | G ⁴ | H | J | K | L | M | P | Q ⁴ | R | S | T | Y | | |
| | | | | Dia. | Sq. | | | | | | | | | | | | | Dia. | Sq. | |
| 030 | 3 | 1 ¼ | 1 ¼ | 15.0 | 15.0 | 3.19 | 4.38 | 5.38 | 4.88 | 2.38 | 3.13 | 8.38 | 9.0 | 9.50 | 20.06 | 5.19 | 8.0 | .50 | 15.25 | 15.25 |
| | 76 | 32 | 32 | 381 | 381 | 81 | 111 | 137 | 124 | 60 | 80 | 213 | 229 | 241 | 510 | 132 | 203 | 13 | 387 | 387 |
| 040 | 4 | 2 | 1 | 18.0 | 18.0 | 3.31 | 5.0 | 6.13 | 5.63 | 2.75 | 3.38 | 9.88 | 10.5 | 9.88 | 21.31 | 5.31 | 8.0 | .50 | 18.25 | 18.25 |
| | 102 | 51 | 38 | 457 | 457 | 84 | 127 | 156 | 143 | 70 | 86 | 251 | 267 | 251 | 541 | 135 | 203 | 13 | 387 | 464 |
| 060 | 6 ² | 2 ½ | 2 | 23.50 | 22.50 | 4.31 | 6.50 | 6.94 | 6.0 | 3.0 | 4.63 | 12.75 | 13.50 | 10.0 | 24.31 | 7.38 | 8.0 | .50 | 23.75 | 22.75 |
| | 152 | 64 | 51 | 597 | 572 | 109 | 165 | 176 | 152 | 76 | 118 | 324 | 343 | 254 | 617 | 187 | 203 | 13 | 603 | 578 |

¹Burners are available with round or square blocks. Order must specify block shape and length.

²Special shapes and lengths are available, please contact your Bloom Representative

³2026-060 burner air connection has 6"-125# standard drilling.

⁴Add 5/16" (8 mm) to "G" and "Q" dimensions for 2026-060 burners with 11½" (292 mm) and longer blocks.

"N" Dimension

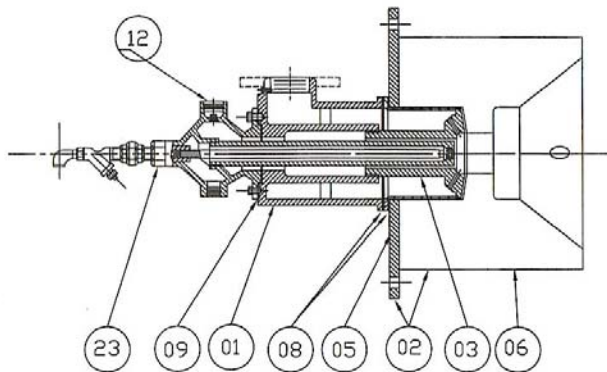
| Catalog No. 2026- | 9" (229 mm) Long Block | | 9.25" (235 mm) Long Block | | 11.50" (292 mm) Long Block | | 11.75" (298 mm) Long Block | | 13.50" (343 mm) Long Block | | 13.75" (349 mm) Long Block | |
|-------------------|------------------------|----|---------------------------|----|----------------------------|----|----------------------------|----|----------------------------|----|----------------------------|----|
| | inches | mm | inches | mm | inches | mm | inches | mm | inches | mm | inches | mm |
| 030 | .63 | 16 | .38 | 10 | .63 | 16 | .38 | 10 | .63 | 16 | .38 | 10 |
| 040 | .63 | 16 | .38 | 10 | .63 | 16 | .38 | 10 | .63 | 16 | .38 | 10 |
| 060 | .63 | 16 | .63 | 16 | .63 | 16 | .63 | 16 | .63 | 16 | .63 | 16 |

NOTE: GENERAL DIMENSION INFORMATION. SEE BLOOM REPRESENTATIVE FOR CERTIFIED DIMENSIONS FOR CONSTRUCTION

CAUTION: The improper use of combustion equipment can result in a condition hazardous to people and property. Users are urged to comply with National Safety Standards and/or Insurance Underwriters recommendations

2026 SERIES HTR[®] COLD AIR BURNER GAS AND LP

PARTS LIST



| Part Number | Description |
|-------------|-----------------------------------|
| 01 | Body |
| *02 | Mounting Plate and Block Assembly |
| 03 | Nozzle Assembly |
| 05 | Mounting Plate |
| *06 | Block |
| 08 | Gasket (body) |
| 09 | Gasket (tee) |
| 12 | Gas Orifice |
| +23 | Oil Burner Assembly |

*See 1900 Series bulletin for parts list.

*Specify block shape, dimensions and length.

Part number must be preceded by catalog number.

Example:

To order Part 02 – Mounting Plate and Block Assembly for 2026-040 Burner w/ Round Block

Specify –

2026-040 - 02 18" diameter, 9" long
(catalog number) (part number) (block shape and dimensions)

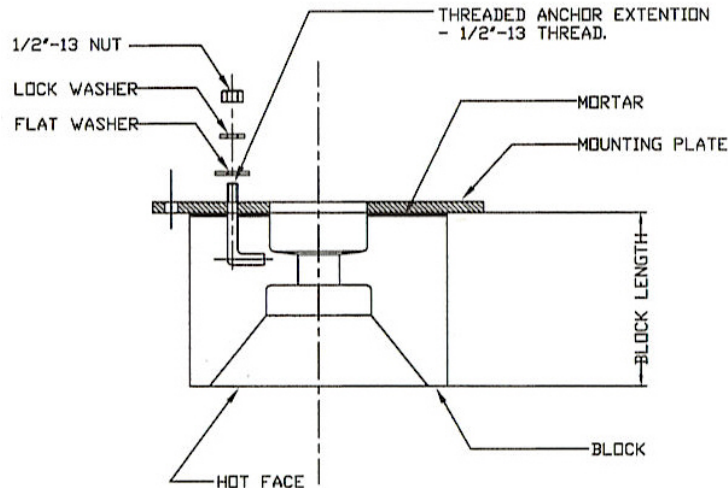
APPROXIMATE BURNER WEIGHTS

| Catalog No. 2026- | 9" (229 mm) Long Block Round | | 9.25" (235 mm) Long Block Square | | 11.50" (292 mm) Long Block Round | | 11.75" (298 mm) Long Block Square | | 13.50" (343 mm) Long Block Round | | 13.75" (349 mm) Long Block Square | |
|-------------------|------------------------------|-----|----------------------------------|-----|----------------------------------|-----|-----------------------------------|-----|----------------------------------|-----|-----------------------------------|-----|
| | lbs | kg | lbs | kg | lbs | kg | lbs | kg | lbs | kg | lbs | kg |
| 030 | 250 | 113 | 275 | 125 | 280 | 127 | 315 | 143 | 330 | 150 | 375 | 170 |
| 040 | 310 | 141 | 400 | 181 | 355 | 161 | 470 | 213 | 435 | 197 | 570 | 259 |
| 060 | 505 | 229 | 570 | 259 | 590 | 268 | 665 | 302 | 690 | 313 | 775 | 352 |

CAUTION: The improper use of combustion equipment can result in a condition hazardous to people and property. Users are urged to comply with National Safety Standards and/or Insurance Underwriters recommendations

2026 SERIES HTR[®] COLD AIR BURNER GAS AND LP OIL

MOUNTING PLATE AND BLOCK ASSEMBLY INSTRUCTIONS



1. Place block with hot face down.
2. Check that mounting plate fits onto anchor extensions and that pilot and/or Flame Supervision holes line-up.
3. Remove mounting plate from block and coat surface of block which abuts plate with 1/16" to 1/8" thickness of high temperature air setting mortar.
4. Coat threaded anchor extensions with high temperature lubricant.
5. Reset mounting plate on block as previously done in Step 2 above.
6. Place washers and nuts on threaded anchors.
7. Draw mounting plate down evenly against block. Do not exceed 30 to 40 ft. lb. torque on nuts. (If torque wrench not available, tighten to snug fit.) Check to see that "hold dimension" is correct. Also be sure mounting plate is drawn down evenly against block as misalignment will not permit proper burner assembly.
8. Mounting plate is now ready for installation on furnace.

| Catalog No. 2026- | Block Length | | | | | |
|----------------------|------------------------------------|----|---------------------------------------|-----|---------------------------------------|-----|
| | 9.0" (229 mm) or 9.25" (235 mm) | | 11.50" (292 mm) or 11.75" (298 mm) | | 13.50" (343 mm) or 13.75" (349 mm) | |
| | A ± .06" (2 mm) | | A ± .06" (2 mm) | | A ± .06" (2 mm) | |
| | inches | mm | inches | mm | inches | mm |
| 030 | 3.0 | 76 | 5.50 | 140 | 7.50 | 191 |
| 040 | 2.13 | 54 | 4.63 | 118 | 6.63 | 168 |
| 060 | 0 | 0 | 2.25 | 57 | 4.25 | 108 |

NOTE: GENERAL DIMENSION INFORMATION. SEE BLOOM REPRESENTATIVE FOR CERTIFIED DIMENSIONS FOR CONSTRUCTION

CAUTION: The improper use of combustion equipment can result in a condition hazardous to people and property. Users are urged to comply with National Safety Standards and/or Insurance Underwriters recommendations