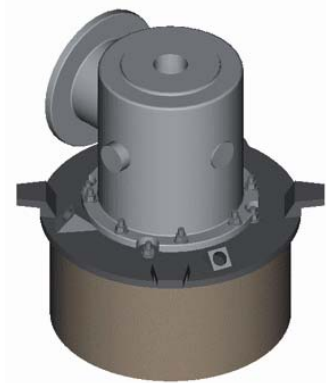


## 2180 SERIES AIR STAGED ULTRA LOW NOX™ HTR® HOT AIR BURNER

### CAPABILITIES

- High thermal release
- Flat profile flame
- High temperature radiation without flame impingement
- Ability to place heat where required
- High turndown capability
- Nominal capacity range 1 MM to 3 MM BTU/hr



### FEATURES

- High temperature radiation through high speed combustion
- Exceptionally low NOx while maintaining ideal coanda (flat profile) flame
- Internal air staging
- Single air connection
- No protrusions into the furnace
- Extra rugged port block and mounting plate construction

### CONTROL

- Pressure Balance Ratio Regulator
- Mass Balance Control

### APPLICATIONS

- Reheat Furnace
- Forging Furnace
- Continuous Strip Reheating
- Aluminum Chip Melting
- Galvanizing
- Tube Upsetting
- Many Others

### BURNER IGNITION

- Pilot
- Direct Spark

### FUEL CAPABILITIES

- Natural Gas
- Coke Oven Gas

### OPTION

- Mounting plate designs – lug type for roof mounting and square for side wall mounting

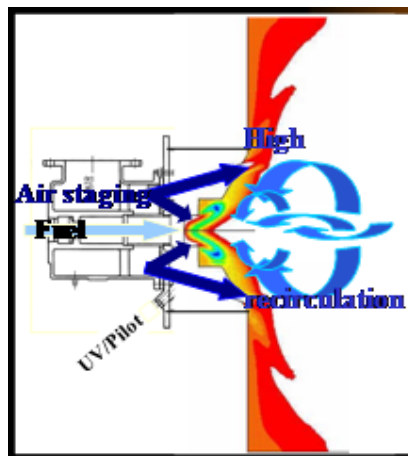
**CAUTION:** The improper use of combustion equipment can result in a condition hazardous to people and property. Users are urged to comply with National Safety Standards and/or Insurance Underwriters recommendations

## 2180 SERIES AIR STAGED ULTRA LOW NO<sub>x</sub><sup>TM</sup> HTR<sup>®</sup> HOT AIR BURNER

### CAPACITY CHART

Catalog No. 2180-	Nominal Capacity (MM Btu/hr HHV)	Combustion Air Flow at 20" wcdp (50 mBar) and 800°F (427°C)		Natural Gas Flow at 14" wcdp (35 mBar) and 70°F (21°C)	
		SCFH	Nm <sup>3</sup> /hr	SCFH	Nm <sup>3</sup> /hr
040	1.05	11,550	295	1050	28
060-A	1.31	14,410	386	1310	35
060-B	1.82	20,020	537	1820	49
080-A	2.82	31,020	832	2820	76
080-B	3.27	35,970	964	3270	88

The 2180 Series Burner is primarily designed for moderately oxidizing to slightly reducing ratios. Careful consideration should be given to the turndown requirements so that for a given application the appropriate air pressure is selected.



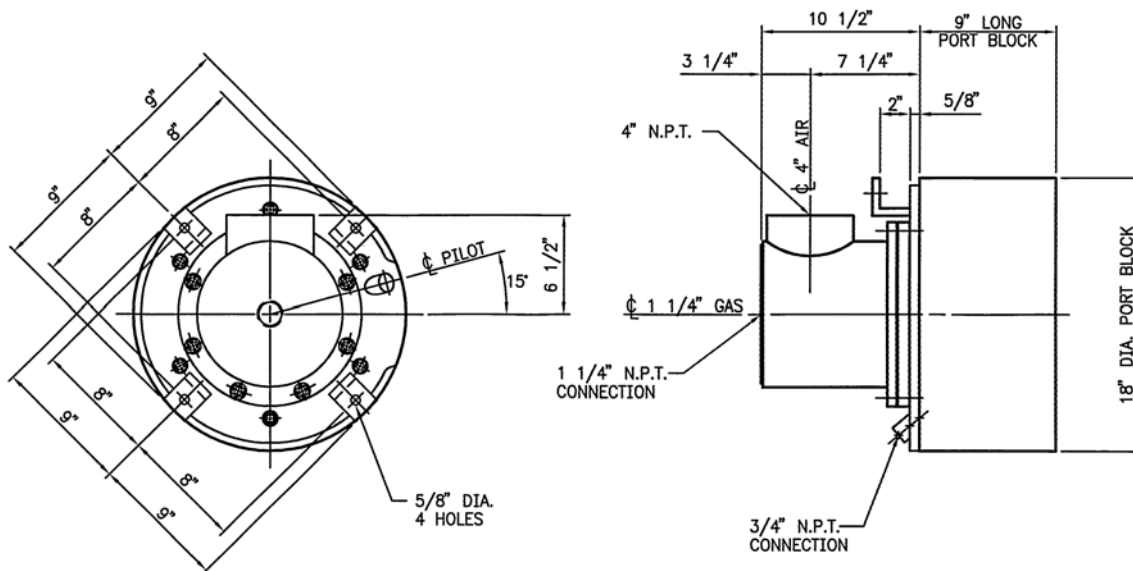
2180 Ultra Low NO<sub>x</sub> recirculation pattern.

NOTE: GENERAL DIMENSION INFORMATION. SEE BLOOM REPRESENTATIVE FOR CERTIFIED DIMENSIONS FOR CONSTRUCTION

CAUTION: The improper use of combustion equipment can result in a condition hazardous to people and property. Users are urged to comply with National Safety Standards and/or Insurance Underwriters recommendations

## 2180 SERIES AIR STAGED ULTRA LOW NOX™ HTR® HOT AIR BURNER

### -040 DIMENSIONS



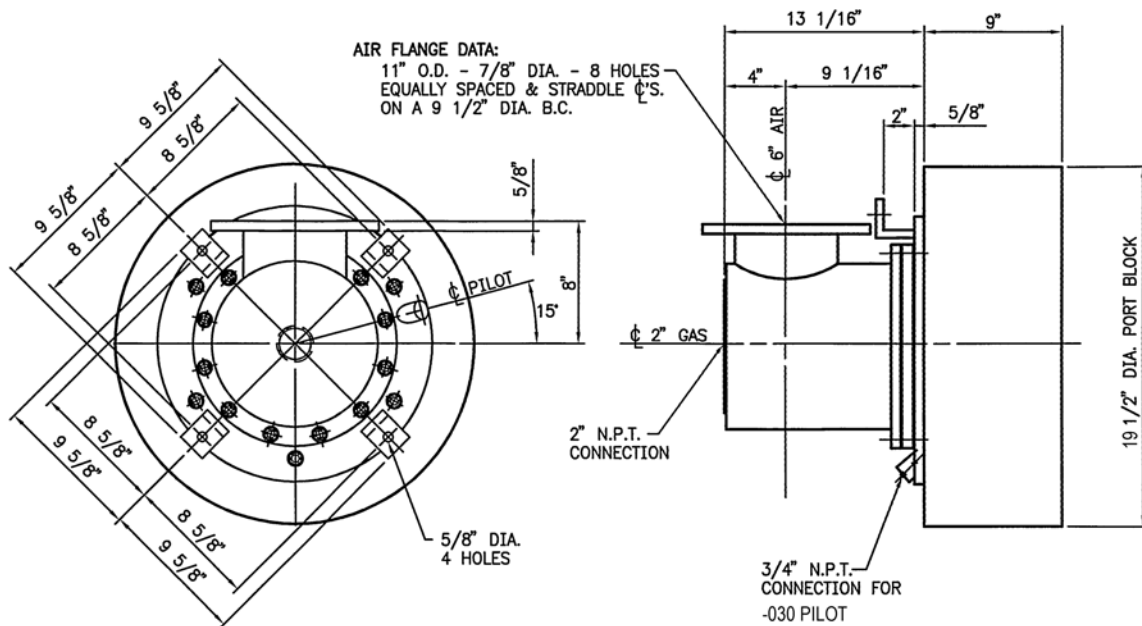
Burner Assembly with Round Port Block  
And  
Lug Mounting Plate  
with Pilot Provision Only

**NOTE: GENERAL DIMENSION INFORMATION. SEE BLOOM REPRESENTATIVE FOR CERTIFIED DIMENSIONS FOR CONSTRUCTION**

**CAUTION:** The improper use of combustion equipment can result in a condition hazardous to people and property. Users are urged to comply with National Safety Standards and/or Insurance Underwriters recommendations

## 2180 SERIES AIR STAGED ULTRA LOW NOX™ HTR® HOT AIR BURNER

### -060 DIMENSIONS



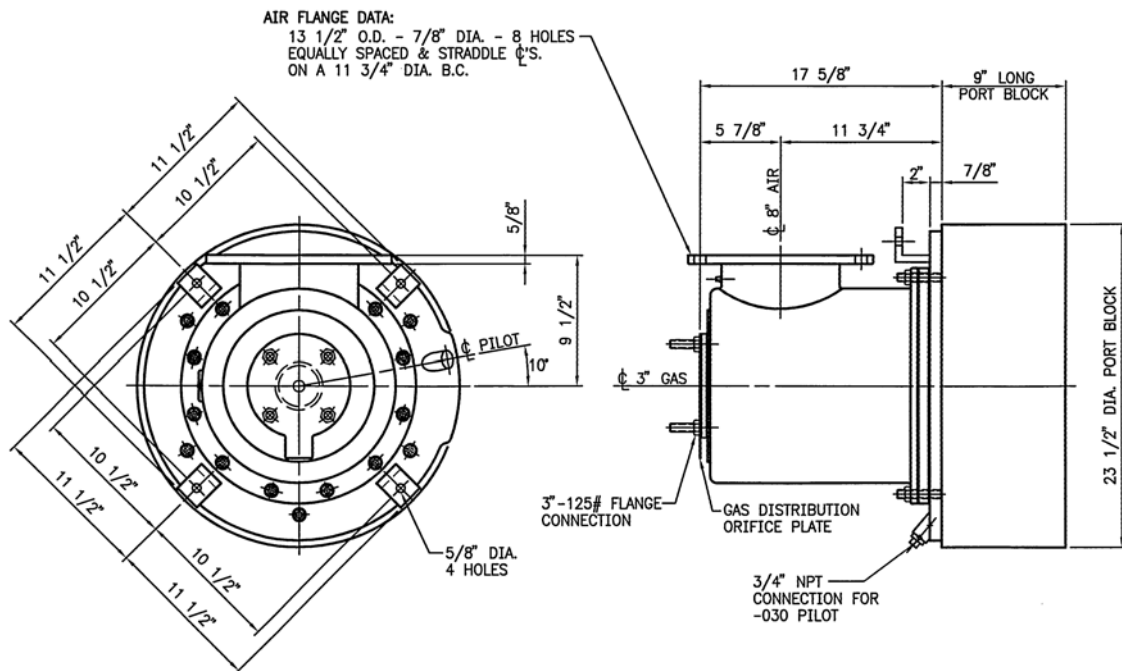
Burner Assembly with Round Port Block  
And  
Lug Mounting Plate  
with Pilot Provision Only

NOTE: GENERAL DIMENSION INFORMATION. SEE BLOOM REPRESENTATIVE FOR CERTIFIED DIMENSIONS FOR CONSTRUCTION

CAUTION: The improper use of combustion equipment can result in a condition hazardous to people and property. Users are urged to comply with National Safety Standards and/or Insurance Underwriters recommendations

# 2180 SERIES AIR STAGED ULTRA LOW NOX™ HTR® HOT AIR BURNER

## -080 DIMENSIONS



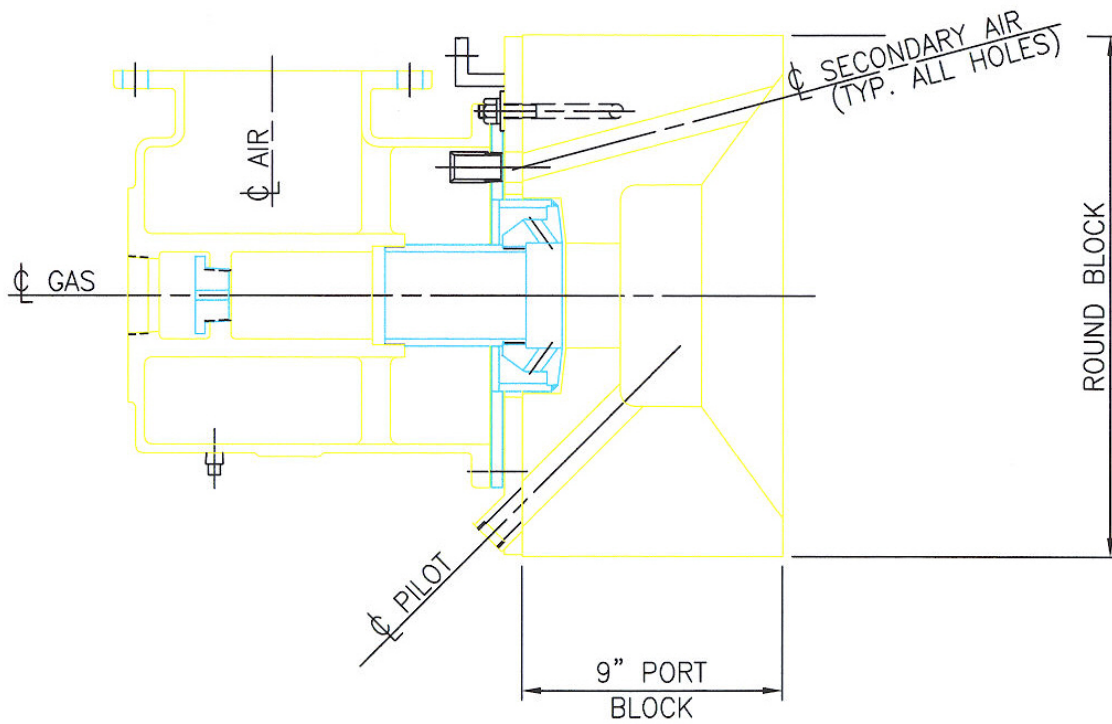
Burner Assembly with Round Port Block  
And  
Lug Mounting Plate  
with Pilot Provision Only

NOTE: GENERAL DIMENSION INFORMATION. SEE BLOOM REPRESENTATIVE FOR CERTIFIED DIMENSIONS FOR CONSTRUCTION

CAUTION: The improper use of combustion equipment can result in a condition hazardous to people and property. Users are urged to comply with National Safety Standards and/or Insurance Underwriters recommendations

# 2180 SERIES AIR STAGED ULTRA LOW NOX™ HTR® HOT AIR BURNER

## GENERAL ARRANGEMENT



**NOTE: GENERAL DIMENSION INFORMATION. SEE BLOOM REPRESENTATIVE FOR CERTIFIED DIMENSIONS FOR CONSTRUCTION**

**CAUTION:** The improper use of combustion equipment can result in a condition hazardous to people and property. Users are urged to comply with National Safety Standards and/or Insurance Underwriters recommendations