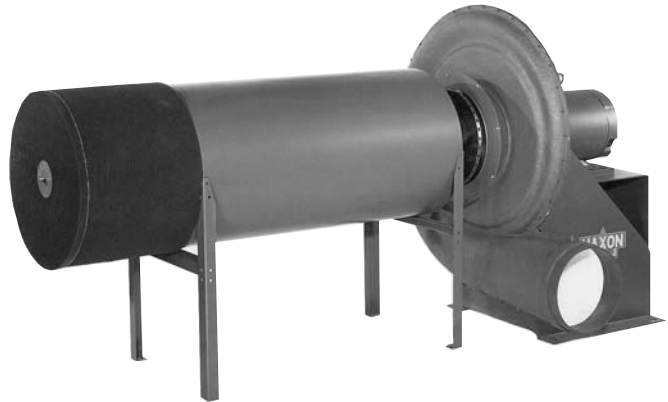


Design Details

Series FG Blowers provide a superior combination of efficiency and strength. The case is laid up in precision mold equipment and coated internally with a Gelcoat liner for a smooth, hard inner surface.

This construction method permits use of a high efficiency involute scroll design, while the particular blend of fiberglass and plastic resin have been selected for industrial-use case strength.

Pressure Blowers are often used as a burner system combustion air supply. Maxon builds a broad line of industrial combustion equipment. Catalog literature describing the particular burner type chosen will aid in selection of the proper Pressure Blower.



Blower with Axial Flow Silencer and Filter

Accessories

Dampening pad sets may be placed between blower base and support pad.

Filter assemblies are available for dusty or dirty applications, or where clean filtered outlet air is desirable. They include a UL-approved class II (flame retardant) washable foam or permanent element, and may be used alone or in conjunction with a silencer.

Silencer assemblies are offered for applications where noise level control is necessary. They may be used alone or fitted with washable air filters. Design is box-type (shown at right) or axial flow (shown above) depending on blower size.

A complete burner system using pressure blowers will also include gas train, proportioning and mixing equipment and a control panel. Your Maxon representative can help you choose from the broad range available.



Permanent Filter



Blower with Silencer and Washable Filter