

**Models: 764, 765M\*, 766M\*, 767**

Job Name \_\_\_\_\_

Contractor \_\_\_\_\_

Job Location \_\_\_\_\_

Approval \_\_\_\_\_

Engineer \_\_\_\_\_

Contractor's P.O. No. \_\_\_\_\_

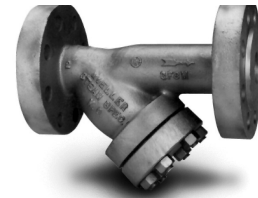
Approval \_\_\_\_\_

Representative \_\_\_\_\_

# LEAD FREE\*

## Cast Carbon & Alloy Steel Flanged Ends Y Strainers

Model: 764, 765M\*, 766M\*, 767  
 Sizes: 1/2" - 12"



Models: 764, 765M, 766M, 767

\* 765M and 766M supersede models 765/766. Consult factory.

**Construction**

- Designed for high pressure and temperature services.
- Alloy bolting for all sizes.
- Heavy gauge reinforced screens are used.
- Flanges are back faced, or spot faced at the boltholes.
- Ring Type Joint (RTJ) flanges are available, consult factory.

**Self-Cleaning**

- Self-cleaning is accomplished by opening the plug or valve connected to the blowoff outlet, if provided.
- Cleaning usually accomplished by shutting off line pressure and disassembling strainer.

**Blowoff Outlets**

- Cover flange for 764 is furnished with blowoff tapping, not plugged.
- All other covers normally furnished as blind flanges. Socket weld blowoff connection available, specify on order.

**Capacity**

- Generously proportioned bodies.
- Open Area Ratio much greater than pipe size, ensuring low pressure drop.
- Minimum of 4 to 1 Open Area Ratio using standard 1/16 and 1/8 perf screens.

**Screens**

MODEL	SIZES	STANDARD (WATER)		STEAM RECOMMENDATION	
		MATERIAL	OPENING	MATERIAL	OPENING
All	1/2 - 4"	304SS	.062 perf	304SS	.033 perf
All	5" and Up	304SS	.125 perf	304SS	.045 perf

**NOTICE**

The information contained herein is not intended to replace the full product installation and safety information available or the experience of a trained product installer. You are required to thoroughly read all installation instructions and product safety information before beginning the installation of this product.

\*The wetted surface of this product contacted by consumable water contains less than 0.25% of lead by weight.

PRESSURE/TEMPERATURE-NON-SHOCK		
MODEL	MATERIAL	RATING
764	Carbon Steel	1480 psi @ 100°F
		102.1 bar @ 38°C
		825 psi @ 800°F
		57.5 bar @ 425°C
765M	Carbon Steel	2220 psi @ 100°F
		153.2 bar @ 38°C
		1235 psi @ 800°F
		86.3 bar @ 425°C
766M	Carbon Steel	3705 psi @ 100°F
		255.3 bar @ 38°C
		2055 psi @ 800°F
		143.8 bar @ 425°C
767	Carbon Steel	6170 psi @ 100°F
		425.5 bar @ 38°C
		3430 psi @ 800°F
		239.7 bar @ 425°C
764	Chrome-Moly A217 WC6	1500 psi @ 100°F
		103.4 bar @ 38°C
		430 psi @ 1000°F
		29.8 bar @ 538°C
765M	Chrome-Moly A217 WC6	2250 psi @ 100°F
		155.1 bar @ 38°C
		650 psi @ 1000°F
		44.7 bar @ 538°C
766M	Chrome-Moly A217 WC6	3750 psi @ 100°F
		y258.6 bar @ 38°C
		1080 psi @ 1000°F
		74.5 bar @ 538°C
767	Chrome-Moly A217 WC6	6250 psi @ 100°F
		430.9 bar @ 38°C
		1800 psi @ 1000°F
		124.1 bar @ 538°C

**764—Class 600**  
**766M—Class 1500**

**765M—Class 900**  
**767—Class 2500**

**Features**

- Machined seats in both body and cap align and lock the screen in place to stop sediment bypass.
- Machined seats facilitate alignment and accurate reseating after servicing.

Mueller Steam Specialty product specifications in U.S. customary units and metric are approximate and are provided for reference only. For precise measurements, please contact Mueller Steam Specialty Technical Service. Mueller Steam Specialty reserves the right to change or modify product design, construction, specifications, or materials without prior notice and without incurring any obligation to make such changes and modifications on Mueller Steam Specialty products previously or subsequently sold.

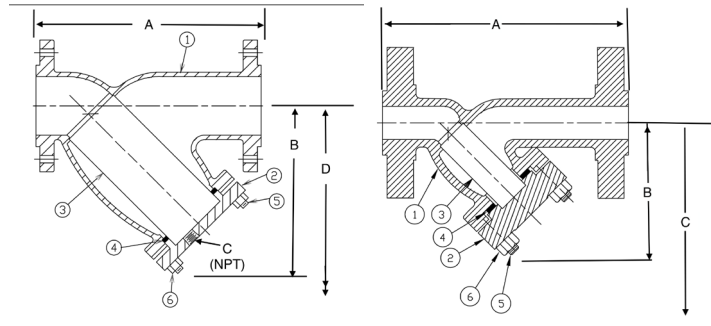
**Mueller Steam Specialty™**

**A WATTS Brand**

# Material

BILL OF MATERIAL MODELS 764-767		
ITEM	DESCRIPTION	MATERIAL
1	BODY	Carbon Steel ASTM A216 Grade WCB
2	COVER **	Carbon Steel ASTM A216 Grade WCB
3	SCREEN	304 SS
4	GASKET	Spiral Wound SS, Graphite Filled
5	STUDS	A193 B7
6	NUTS	A194 2H

\*\* Cover may be manufactured from equivalent grade plate material



Model 764

Model 765M, 766M, 767

**ALSO AVAILABLE:**  
 Body/Cap: Carbon-Moly ASTM A217 Gr. WC1,  
 Chrome-Moly ASTM A217 Gr. WC6,  
 Chrome-Moly ASTM A217 Gr. WC9

## Pressure Drop

See Pressure Drop Charts in Technical Data section of the Mueller Steam Specialty Engineering binder. Cv values are noted in the Dimensions and Weights table below.

## Dimensions and Weights

SIZE	DIMENSIONS							WEIGHT		Cv	
	A		B		C		D Screen Removal		lbs.		kgs.
in.	in.	mm	in.	mm	in.	mm	in.	mm	in.	mm	GPM
<b>764</b>											
1/2	6 5/8	168	3 1/2	89	3/8	10	5	130	6	2.7	8
3/4	8 9/16	211	3 3/4	95	1/2	15	5	130	12.3	5.5	15
1	8 9/16	211	3 3/4	95	1/2	15	5	130	12.3	5.5	22
1 1/4	10 1/8	257	5 1/2	140	1/2	15	8	203	19	8.6	38
1 1/2	10 1/4	260	5 1/2	140	1/2	15	8	203	27	12	42
2	11	279	7	178	1/2	15	10	254	40	18	70
2 1/2	12	305	8 1/4	210	1	25	12 1/2	318	60	27	110
3	13 1/2	343	9 1/4	235	1 1/4	32	14 1/2	368	78	35	140
4	17 15/16	456	12 1/2	318	1 1/2	40	19 1/2	495	160	72.7	245
5	22 1/4	565	15	381	2	50	23	584	254	115	400
6	25 3/8	651	20	508	2	50	31	787	364	165	600
8	31 3/4	806	24	610	2	50	38 1/2	978	670	304	1,000
10	37 1/16	957	28 1/2	724	2	50	45 1/2	1156	1090	495	1,580
12	45 1/2	1156	34 1/2	876	2	50	52	1321	1558	708	2,200

SIZE	DIMENSIONS							WEIGHT		Cv	
	A		B		C		Screen Removal		lbs.		kgs.
in.	in.	mm	in.	mm	in.	mm	in.	mm	lbs.	kgs.	GPM
<b>765M</b>											
1/2	8 1/8	206	4 1/4	108	6"	152	20	9	8		
3/4	9 1/16	230	4 3/4	121	6"	152	30	13.6	15		
1	10 11/16	271	5 3/4	146	8 1/4"	210	52	23	22		
1 1/4	12	305	6 3/4	171	8 1/4"	210	64.5	29	38		
1 1/2	12	305	6 3/4	171	8 1/4"	210	64.5	29	42		
2	13 15/16	354	7 1/2	191	8 3/8"	216	93	42	70		
2 1/2	17 1/2	445	10 3/4	273	12 1/2"	318	185	84	110		
3	17 1/2	445	10 3/4	273	12 1/2"	318	185	84	140		
4	23 1/4	591	15	381	21"	533	250	113	245		
6	27 3/4	705	18 7/8	479	30 11/16"	787	560	254	600		
8	33 1/4	846	23 3/8	606	36 1/4"	921	1000	454	1,000		
10	CF	CF	CF	CF	46 1/2"	1181	CF	CF	1,580		
12	CF	CF	CF	CF	55 1/4"	1403	CF	CF	2,200		

SIZE	DIMENSIONS					WEIGHT		Cv	
	A		B		C		lbs.		kgs.
in.	in.	mm	in.	mm	in.	mm	lbs.	kgs.	GPM
<b>766M</b>									
1/2	8 1/8	206	4 1/4	108	6"	152	20	9	8
3/4	9 1/16	230	4 3/4	121	6"	152	30	13.6	15
1	10 11/16	271	5 3/4	146	8 1/4"	210	52	23	22
1 1/4	12	305	6 3/4	171	8 1/4"	210	64.5	29	38
1 1/2	12	305	6 3/4	171	8 1/4"	210	64.5	29	42
2	13 15/16	354	7 1/2	191	8 3/8"	216	93	42	70
2 1/2	17 1/2	445	10 3/4	273	12 1/2"	318	185	84	110
3	17 1/2	445	10 3/4	273	12 1/2"	318	185	84	140
4	23 1/4	591	15	381	21"	533	334	151	245
6	30 3/8	778	20 1/2	521	30 11/16"	787	770	350	600
8	39	991	26 15/16	684	36 1/4"	921	1200	545	1,000
10	CF	CF	CF	CF	CF	CF	CF	CF	1,580
12	CF	CF	CF	CF	CF	CF	CF	CF	2,200

SIZE	DIMENSIONS					WEIGHT		Cv	
	A		B		C		lbs.		kgs.
in.	in.	mm	in.	mm	in.	mm	lbs.	kgs.	GPM
<b>767</b>									
1/2	12 5/8	321	7 11/16	195	10	254	30	13.6	8
3/4	12 5/8	321	7 11/16	195	10	254	40	18	15
1	12 5/8	321	7 11/16	195	10	254	65	29.5	22
1 1/4	16 7/8	429	10 1/2	267	13	331	140	63.3	38
1 1/2	16 7/8	429	10 1/2	267	13	331	140	63.6	42
2	18 15/16	481	12 1/2	318	15	381	240	109	70
2 1/2	25 3/4	654	18 13/16	478	21	534	500	227	110
3	26 3/4	679	18 13/16	478	21	534	560	254	140
4	33 3/8	854	20 1/4	514	23	585	850	386	245
6	33 3/4	857	20	508	23	585	900	862	600
8	CF	CF	CF	CF	CF	CF	CF	CF	1,000
10	CF	CF	CF	CF	CF	CF	CF	CF	1,580
12	CF	CF	CF	CF	CF	CF	CF	CF	2,200

Apply For Certified Drawings.  
 CF=Consult Factory

**Limited Warranty:** Mueller Steam Specialty warrants each product to be free from defects in material and workmanship under normal usage for a period of one year from the date of original shipment. In the event of such defects within the warranty period, the Company will, at its option, replace or recondition the product without charge. This shall constitute the sole and exclusive remedy for breach of warranty, and the Company shall not be responsible for any incidental, special or consequential damages, including without limitation, lost profits or the cost of repairing or replacing other property which is damaged if this product does not work properly, other costs resulting from labor charges, delays, vandalism, negligence, fouling caused by foreign material, damage from adverse water conditions, chemical, or any other circumstances over which the Company has no control. This warranty shall be invalidated by any abuse, misuse, misapplication or improper installation of the product. **THIS WARRANTY IS IN LIEU OF ALL OTHER WARRANTIES, EXPRESS OR IMPLIED, INCLUDING ANY IMPLIED WARRANTIES OF MERCHANTABILITY OR FITNESS FOR A PARTICULAR PURPOSE.** Any implied warranties that are imposed by law are limited in duration to one year.

Some States do not allow limitations on how long an implied warranty lasts, and some States do not allow the exclusion or limitation of incidental or consequential damages. Therefore the above limitations may not apply to you. This Limited Warranty gives you specific legal rights, and you may have other rights that vary from State to State. You should consult applicable state laws to determine your rights.



A WATTS Brand