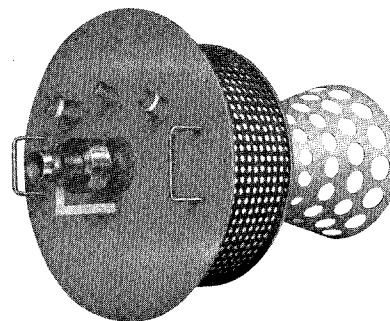
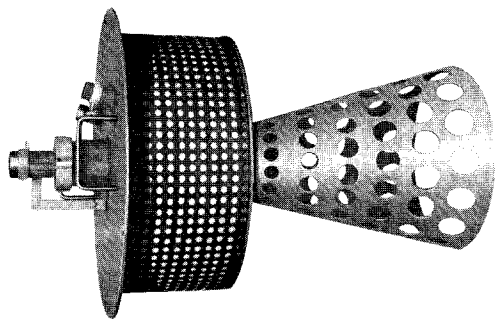


ECLIPSE INCINI-CONE BURNER

SERIES "IC"



Eclipse Incini-Cone burners are designed for fume incineration and/or after-heating of exhaust from turbines, dryers, ovens, and other similar equipment. Incini-Cone burners are mounted in the exhaust duct and require the exhaust stream to supply all of the oxygen needed for complete combustion.

Burner assemblies include the burner body, gas or oil gun, gas pilot with ignition plug, and peepsight. Nine sizes are available with maximum inputs from 1,360,000 Btu/Hr. up to 14,800,000 Btu/Hr. Eclipse can supply valve trains and all other other components required for a complete combustion system.

SPECIFICATIONS

Max. Exhaust Temp.:

Upstream of Burner: 1100° F.

Downstream of Burner: 1650° F.

Nominal Hot Exhaust ΔP Across Burner: 2" W.C.

Min. Exhaust O₂ Content: 13%

Capacities & Turndown: See table.

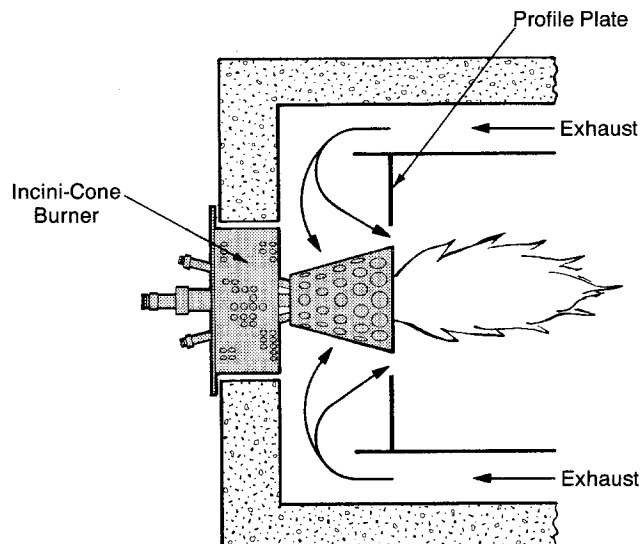
Flame Monitoring: U.V. Scanner Only.

Materials: All metal exposed to flame is high performance stainless steel.

FEATURES

- • • Gas or oil firing with interchangeable gas and oil guns
- • • Insulated back-plate for cooler working environment
- • • Fuel turndowns up to 26:1 depending on the application
- • • Fume stream turndowns up to 2.5:1
- • • Concentric design insures even mixing and combustion
- • • Compact design allows for easy burner removal and access to incinerator
- • • Minimal maintenance

TYPICAL APPLICATION



Profile plate is sized to produce a 2"W.C. hot exhaust ΔP across the burner.

CAUTION: It is dangerous to use any fuel burning equipment unless it is equipped with suitable flame sensing devices and automatic fuel shut-off valves. Eclipse can supply such equipment or information on other sources.

CAPACITIES

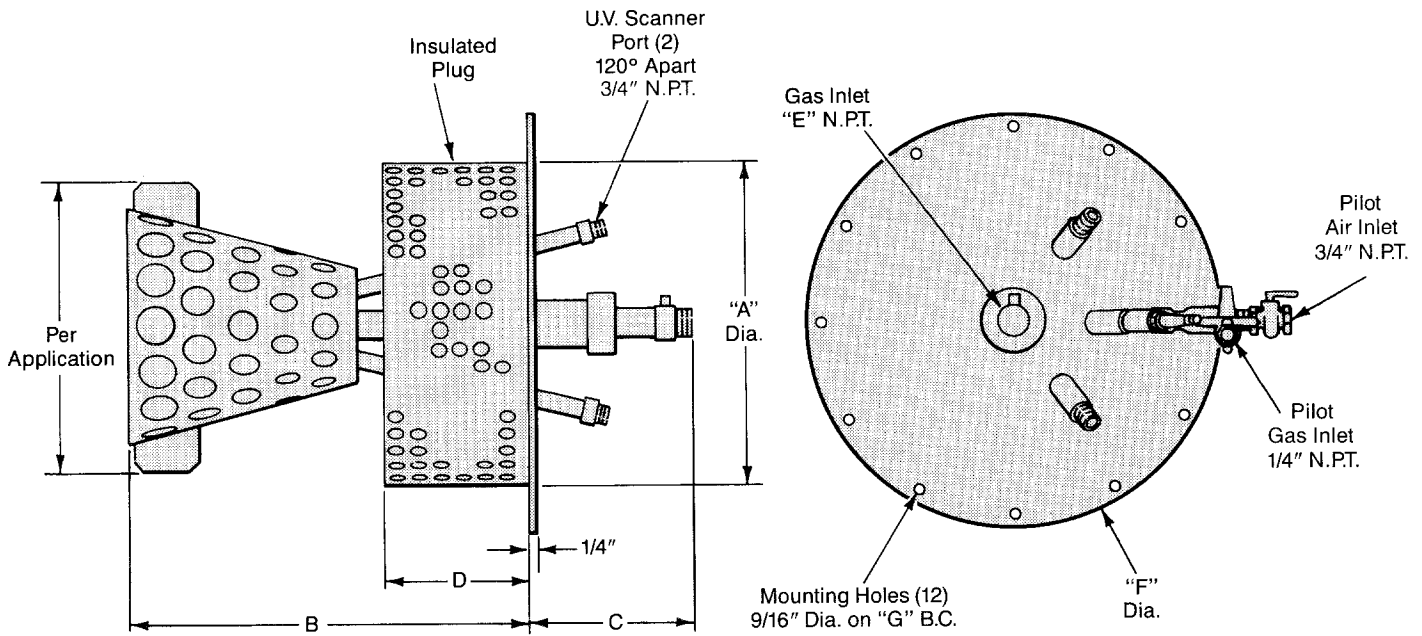
Catalog Number	Capacities			
	1000's Btu/Hr		Kilowatts	
	Minimum	Maximum	Minimum	Maximum
136 IC	52	1360	15	400
224 IC	85	2240	25	650
360 IC	136	3600	40	1050
500 IC	188	5000	55	1450
680 IC	260	6800	75	2000
900 IC	344	9000	100	2600
1480 IC	563	14800	165	4300

Supply pressures and pilot capacities depend on the application.



ECLIPSE COMBUSTION

DIMENSIONS



Gas gun is shown. Contact Eclipse for information on oil guns.

DIMENSIONS

Catalog Number	Dimensions In Inches							Weight Pounds
	A	B	C	D	E	F	G	
136 IC	15-1/2	23	6-1/2	10	1	20	18	88
224 IC	19-1/2	25	8-3/4	10	1-1/4	24	22	121
360 IC	23-1/2	28-1/2	6-1/2	10	1-1/2	28	26	132
500 IC	23-1/2	30-1/4	8-3/8	10	2	28	26	150
680 IC	23-1/2	35-3/4	6-3/8	10	2	28	26	176
900 IC	27-3/8	41-1/2	8	12	2-1/2	32	30	214
1480 IC	31-3/8	47-7/8	8	14	3	36-1/2	34-1/4	309