

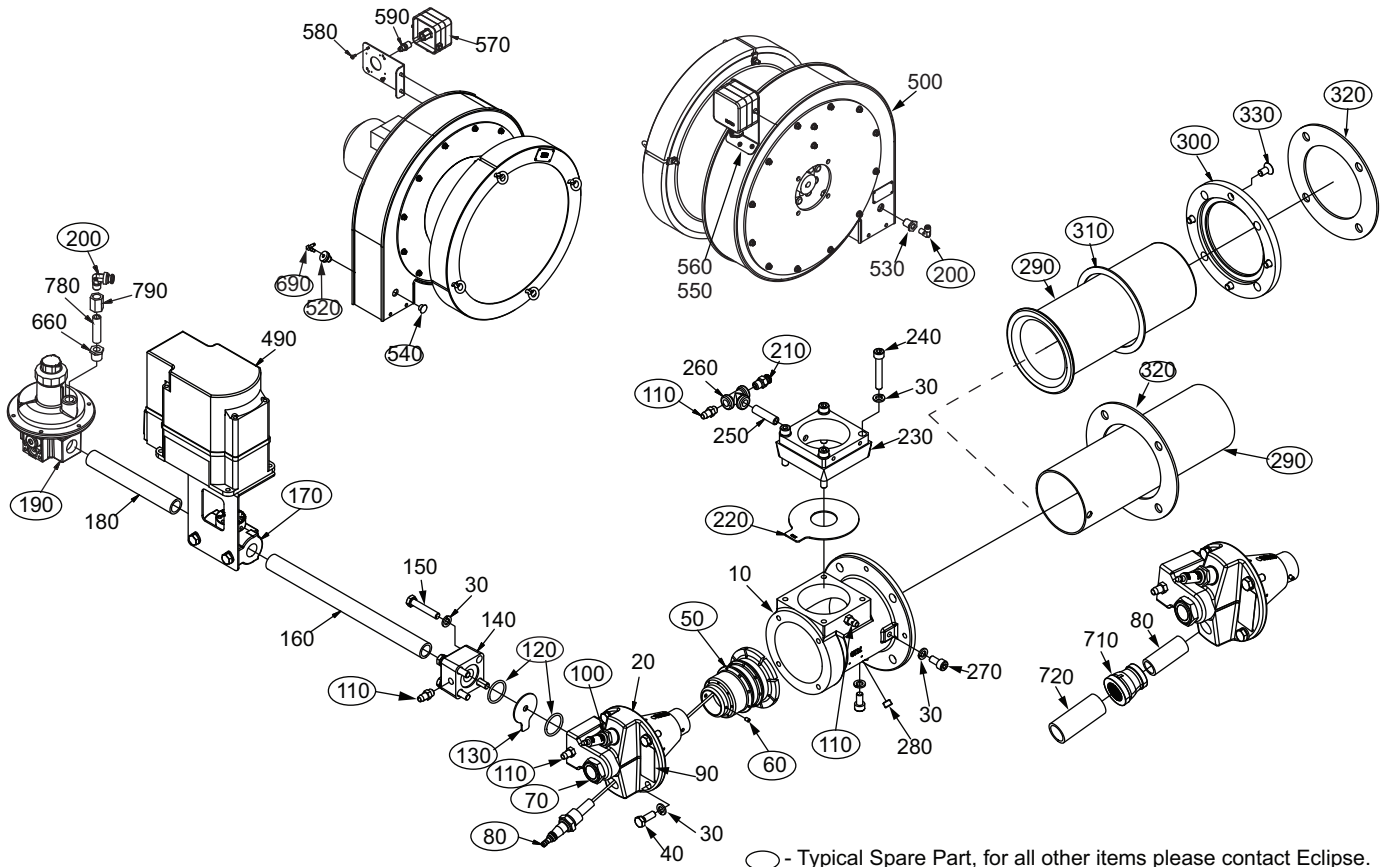
Eclipse ThermAir Burners

Spare Parts List 114-1

4/5/2012

Model TA0015

Version 2.2



Ref	Part Number	Description
50	7033-1	Nozzle
60	19969	Set Screw (M4x6)
70	10509	Peepsight
80	10002242-1	Flamerod
100	23045	Igniter
110	13445	Pressure Tap
120	14777	O-Ring for Fuel Orifice Plate (26.6mm Diameter)
130	14191-18	Butance Orifice Plate (4.2mm)
130	14191-19	Natural Gas Orifice Plate (5.8mm)
130	14191-20	Propane Orifice Plate (4.6mm)
170	202081	Butterfly Valve (0.5" BSP)
170	501239	Butterfly Valve (0.5" NPT)
190	10056169	Ratio Regulator (0.5" NPT)
190	10056170	Ratio Regulator (0.5 Rp)

Ref	Part Number	Description
200	1494	Elbow Fitting for Braided Stainless Steel Impulse Line and Air Switch Line
200	14689	Elbow Fitting for Plastic Impulse Line
200	22085	Elbow Fitting for Stainless Steel Tubing Impulse Line
210	2484	Straight Fitting for Braided Stainless Steel Impulse Line and Antunes Air Pressure Switch
210	14506	Straight Fitting for Plastic Impulse Line and Air Pressure Switch
210	22210	Straight Fitting for Stainless Steel Tubing Impulse Line
220	14188-23	Air Orifice Plate (25mm)
220	14188-30	Air Orifice Plate (27mm)
290	20474	Ceramic Combustor - Straight
290	14887-6	Alloy Combustor - Straight
300	19970	Ceramic Combustor Retaining Ring

(Continued on next page)

TA0015 Spare Parts List (continued)

Ref	Part Number	Description
310	19971	Ceramic Combustor to Retaining Ring Gasket
320	17054	Burner to Furnace Wall Mounting Gasket
330	10001	Screw for Ceramic Combustor Retainer Ring
520	20606	Grommet for Plastic Air Switch Line
540	20605	Button Plug
590	24844	Straight Fitting for Braided Stainless Steel Line for Dungs Air Pressure Switch
690	21197	Barbed Elbow Fitting for Plastic Air Switch Line
N/S	11132	Filter Element (405mm Diameter)
N/S	30027	Stainless Steel Tubing Impulse Line (600mm)
N/S	34505	Plastic Impulse Line (915mm)
N/S	34505	Plastic Air Pressure Switch Line (915mm)
N/S	015991-03	Braided Stainless Steel Impulse Line (915mm)
N/S	015991-03	Braided Stainless Steel Air Pressure Switch Line (915mm)